

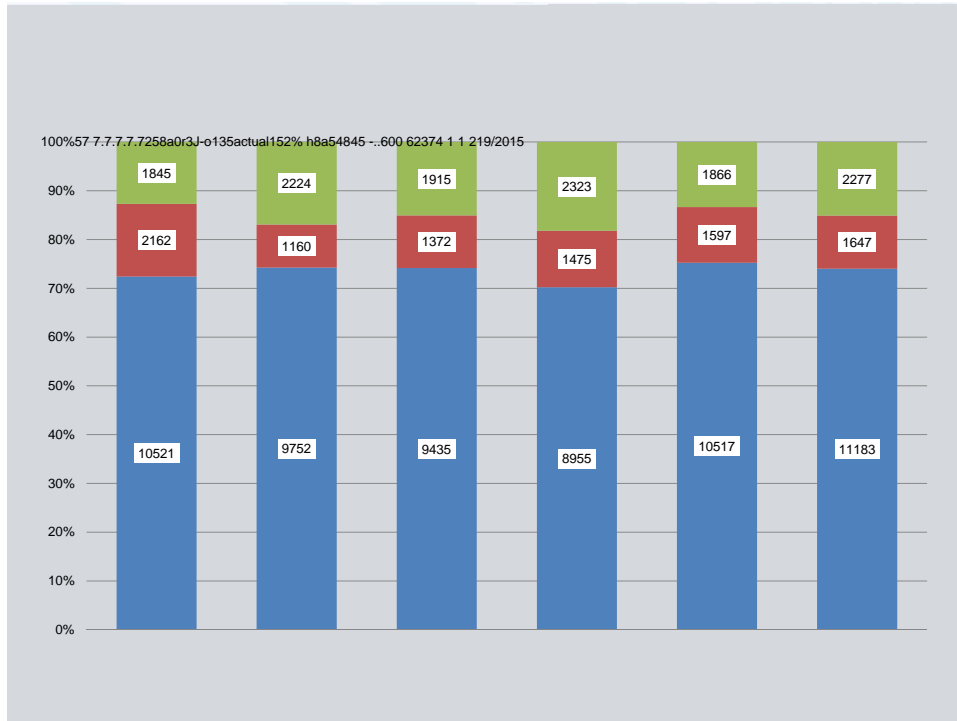
## Benson High School Enrollment Overview

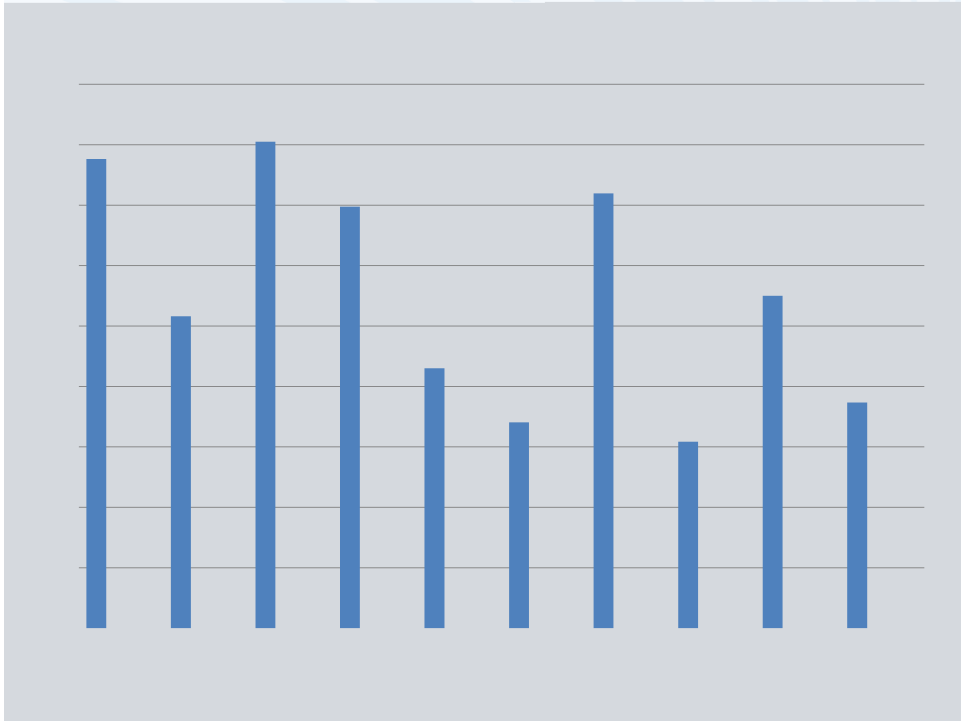
### **Enrollment Context**

- A hundred year long story
- Focus tonight is on recent history and forecasted future
- Information on
  - Goals of High School System Design
  - Actual and forecast enrollment across system
  - Enrollment and demand for Benson

## **20 year enrollment by school type**

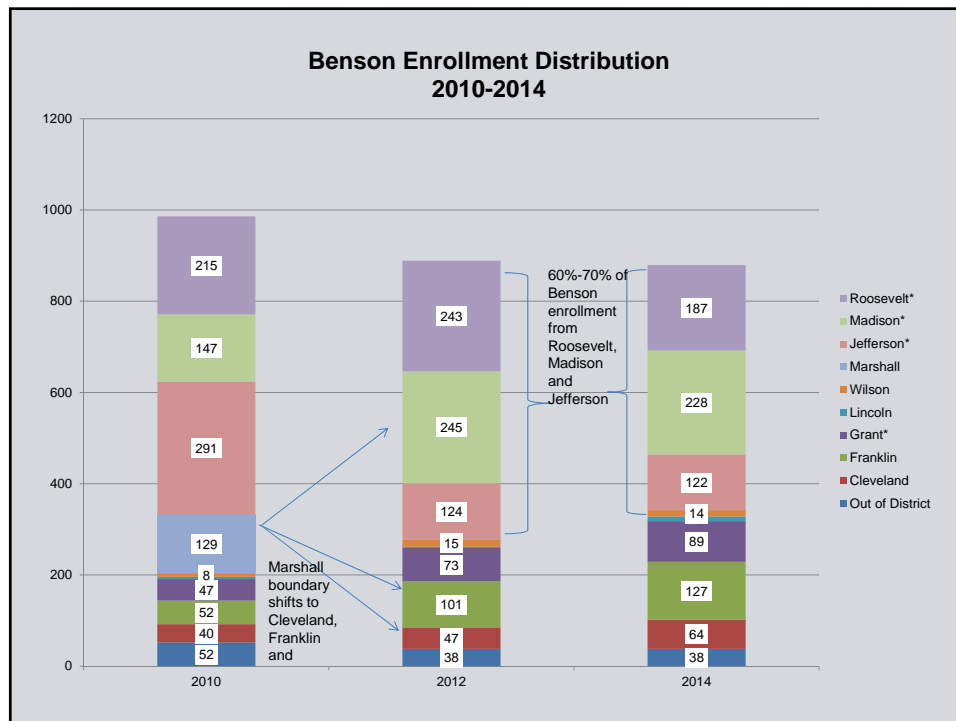
- High school system design principles (2009)
  - 72% of students to comprehensive schools
  - 12% to focus options

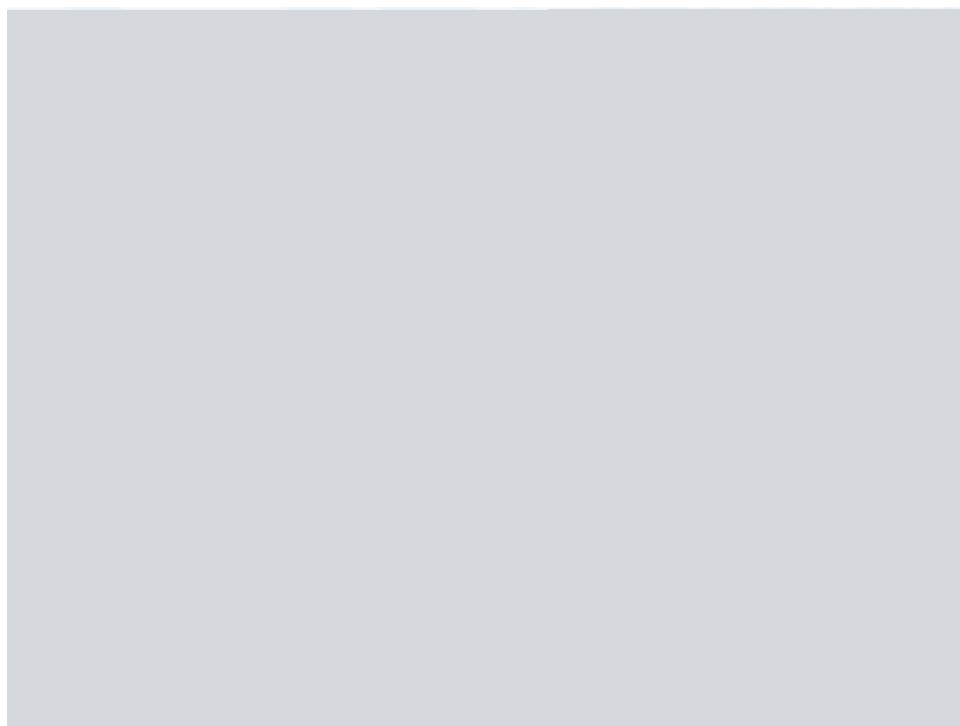




## Benson enrollment by neighborhood

- Benson enrollment continues to be dominated by students who live in the Jefferson, Madison and Roosevelt zones
- A Benson balancer was introduced in 2014 to help produce a student body more reflective of the whole district
- Even with the balancer and increased outreach to underrepresented neighborhoods, demand continued along predictable patterns in 2015





## EXPANSION OF CAREER LEARNING ACROSS DISTRICT- PPS

Portland Public Schools



### CTE students graduate at higher rates

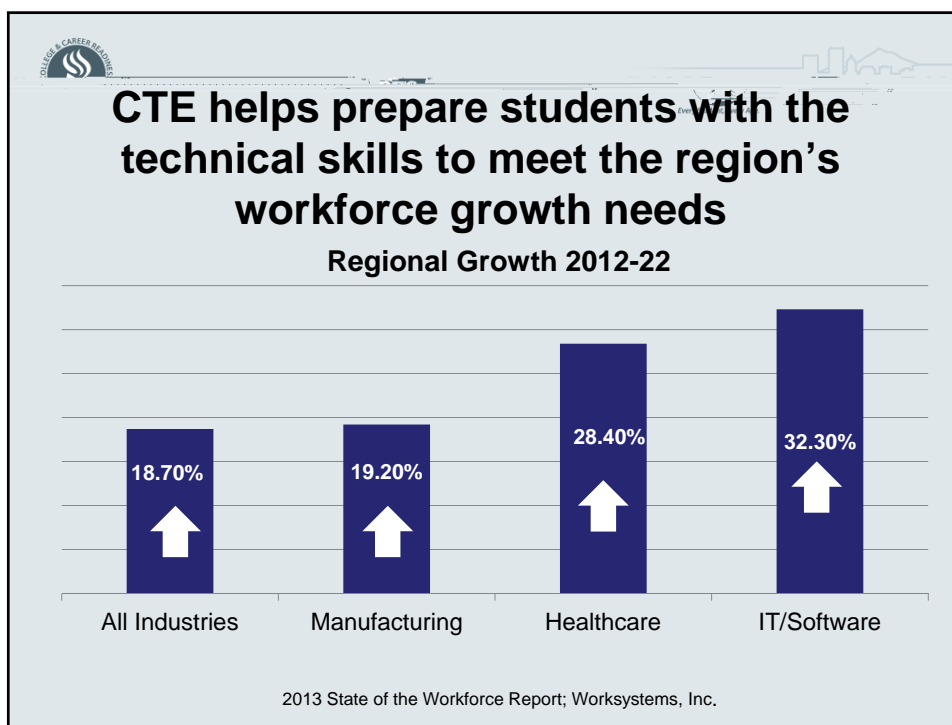
PPS Graduation Rates	*CTE 2011-12	*CTE 2012-13	*CTE 2013-14
District	84%	86%	91%
American Indian	76%	54%	80%
Asian	97%	96%	94%
African American	75%	76%	87%
Hispanic	83%	88%	93%
White	82%	87%	91%

\*CTE Completers – 2 or more credits in a CTE Program of Study

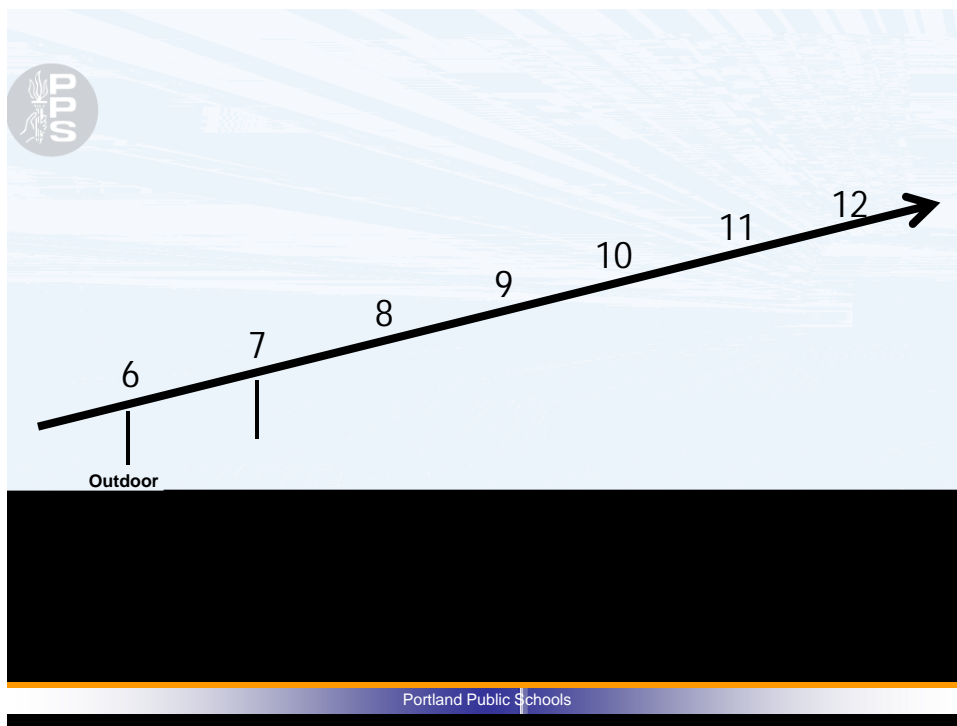
**CTE is a strong predictor for boys staying in high school**

“Earning three or more CTE credits within a focused sequence of courses was second only to 9<sup>th</sup> grade students’ grade point average as the strongest variable affecting high school survival for boys”

National Research Center  
of Career & Technical Education





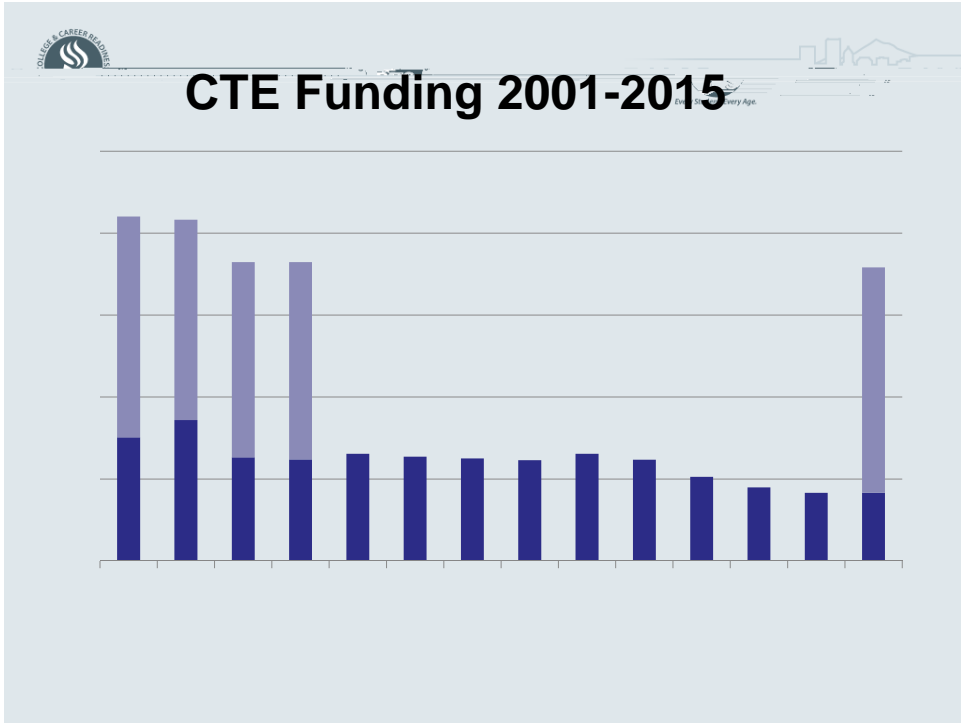




# Aligning CTE to Career Clusters

Every Student, Every Age





Alliance	Benson	Cleveland	Franklin	Grant	Jefferson	Lincoln	Madison	Roosevelt	Wilson
Forestry/Natural Resources	Building Construction Technology	Accounting & Financial Svcs	Building Construction				Health Occupations		Drafting/Design Engineering
Design & Applied Arts	Electrical Engineering Tech	Marketing Management	Office Technology				Marketing Management		Early Childhood Education
Production Technology/Mfg	Drafting		Accounting Financial Systems						
Business & Marketing Mgmt	Communications Technology		Child Development						
Mechanical Systems/Auto	Radio Broadcasting								

A slide with a light gray background. A dark blue horizontal bar is positioned in the lower-left quadrant, containing the word "BENSON" in white, bold, uppercase letters. At the bottom of the slide, there is a thin orange horizontal line above a white bar that contains the text "Portland Public Schools" in a small, dark font.

**BENSON**

Portland Public Schools

A slide with a light gray background. A dark blue horizontal bar is positioned at the top, containing the text "Benson Polytechnic" in white, bold, sans-serif font. Below this bar, the mission statement is written in black text. At the bottom of the slide, there is a thin orange horizontal line above a white bar that contains the text "Portland Public Schools" in a small, dark font.

**Benson Polytechnic**

“Within an environment that fosters diversity, Benson’s mission is to integrate hands-on Career Technical Education and Core Academics today, for the innovations of tomorrow.”

Portland Public Schools

## Current Benson Programming

### Core Academic Courses

- Math
- English
- Social studies
- Science
- World Language
- Special Education
- ESL

### Career Technical Ed

- Auto Transportation
- Manufacturing
- Electric
- Radio
- Digital Media
- Construction
- Architecture Drafting
- Health Occupations

Portland Public Schools

## Future of Benson

- New CTE Programs of Study:
  - Computer Science/Engineering
  - Education
  - Engineering

### Co-oping

11<sup>th</sup> & 12<sup>th</sup> graders from all PPS high schools will have the opportunity to take CTE pathway courses from Benson

Portland Public Schools

## Benson's Five Year Plan 2013-14 - 2017-18

- **Instruction**
  - Expand AVID to include all grades
  - Expand Tech-Geo and Tech Algebra-Enterprise classes
- **Community Building**
  - Benson Tech Foundation and Alumni continue to identify and expand organizations, businesses and/or educational partners
  - Maintain existing & expand student-internship/apprenticeship opportunities
  - Strengthen and expand partnership with higher education institutions
- **Development**
  - Increase freshmen enrollment from 275 to 300.
  - Strengthen and expand Benson's CTE programs
  - Expand CTE advisory committees to include new partners involved in the Master Planning as well as to reflect on evolving technology
  - Grow the school's Booster and Alumni Club membership

Portland Public Schools

## Programs Located at Benson

### Multiple Pathways to Graduation:

Our commitment is to provide multiple pathways to academic achievement where all students are welcome wanted and worthy

- **Dart**
- **Reconnect**
- **Alliance**
- **PISA**
- **Evening Scholar**
- **Summer Scholars**
- **Virtual Scholars**
- **Step Down**

Portland Public Schools

## Capital Bond Considerations

- Design team on board in September
- Education Specifications and Master Planning completed by June 2016
- Considerations for on-site swing space. School enrollments (Benson Polytechnic, Multiple Pathways and other programs) will impact ability.

Portland Public Schools

## Capital Bond Considerations

- If potential November 2016 ballot measure approved by voters earliest projections are:
  - Design in 2017 and 2018
  - Construction 2018 through 2020
  - Occupancy of a fully modernized campus in September 2020.

Portland Public Schools







## CTE students graduate at higher rates

PPS Graduation Rates	*CTE 2011-12	*CTE 2012-13	*CTE 2013-14
District	84%	86%	91%
American Indian	76%	54%	80%
Asian	97%	96%	94%
African American	75%	76%	87%
Hispanic	83%	88%	93%
White	82%	87%	91%

\*CTE Completers – 2 or more credits in a CTE Program of Study

3



## CTE is a strong predictor for boys staying in high school

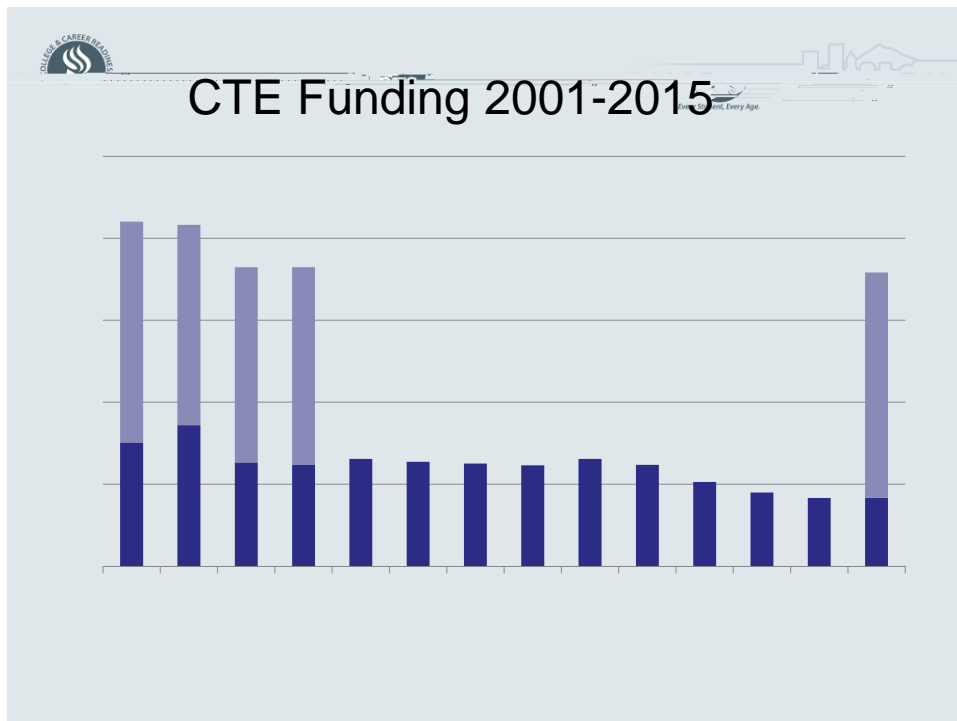
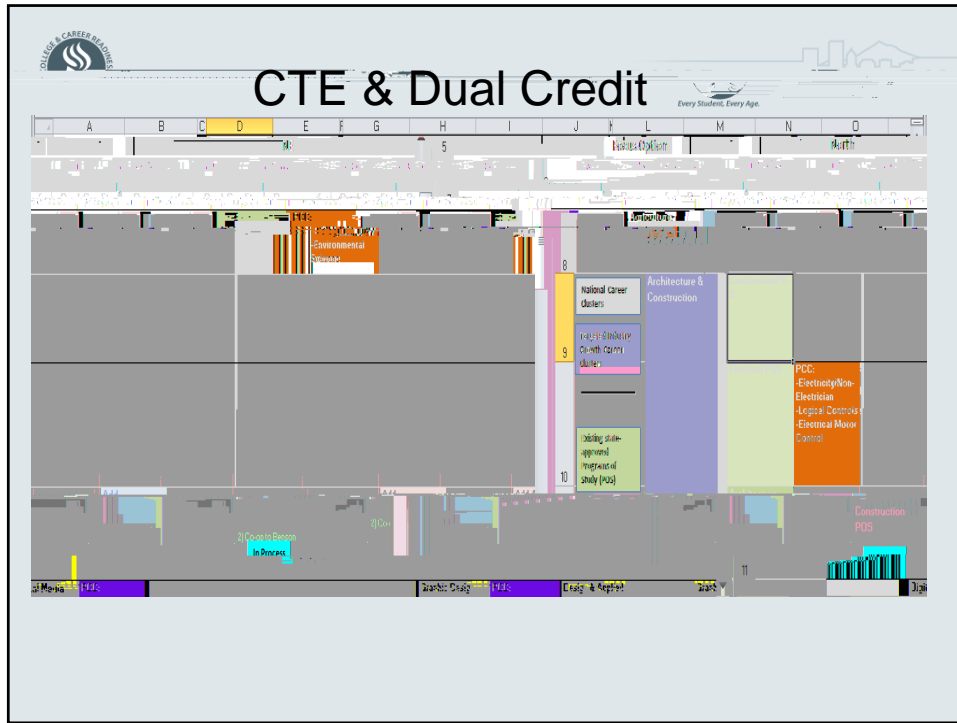
“Earning three or more CTE credits within a focused sequence of courses was second only to 9<sup>th</sup> grade students’ grade point average as the strongest variable affecting high school survival for boys”

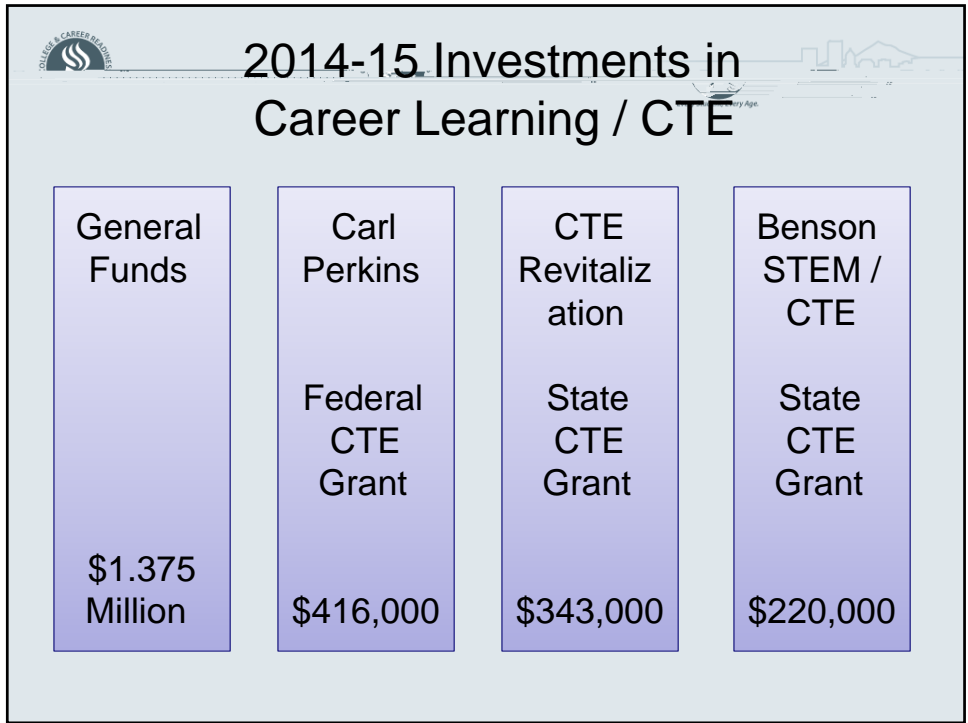
National Research Center  
of Career & Technical Education<sup>®</sup>



Course Titles by Quadrant

Aligning CTE to Career Clusters





Alliance	Benson	Cleveland	Franklin	Grant	Jefferson	Lincoln	Madison	Roosevelt	Wilson
Forestry/Natural Resources	Building Construction Technology	Accounting & Financial Svcs	Building Construction				Health Occupations		Drafting/Design Engineering
Design & Applied Arts	Electrical Engineering Tech	Marketing Management	Office Technology				Marketing Management		Early Childhood Education
Production									

nage-22e4

## 2015-16 49 state-approved CTE Programs of Study

In development

Alliance	Benson	Cleveland	Franklin	Grant	Jefferson	Lincoln	Madison	Roosevelt	Wilson
Natural Resources	Construction Technology	Marketing Management	Construction Technology	Design & Applied Arts		Business & Management	Sustainable Agriculture	Construction	Construction
Graphic Design	Computer Technology/Electric	Culinary Arts	Video Production	Multimedia Theater Arts		Computer Science	Digital Design	Publishing & Broadcasting	Digital Media & Design
Manufacturing Technology	Mechanical CAD/Drafting	Construction	Business, Mgmt & Admin	Computer Technology (ID)		Culinary Arts	Health Services	Engineering	Video Production
Transportation Technology/Auto	Radio Broadcasting	Video Production	Finance	Digital Media			Computer Science		Computer Science
	Digital Media Production		Metals Manufacturing Tech	Audio Engineering			Engineering		Health Sciences
	Health Sciences		Health Services	Health Services					Business & Management
	Manufacturing Tech		Information Technology	Engineering					
	Transportation Technology/Auto		Culinary Arts						
	Computer Science								
4	9	4	8	7	0	3	5	3	6

BENSON

## Benson Polytechnic

“Within an environment that fosters diversity, Benson’s mission is to integrate hands-on Career Technical Education and Core Academics today, for the innovations of tomorrow.”

Portland Public Schools

## Current Benson Programming

### Core Academic Courses

- Math
- English
- Social studies
- Science
- World Language
- Special Education
- ESL

### Career Technical Ed

- Auto Transportation
- Manufacturing
- Electric
- Radio
- Digital Media
- Construction
- Architecture Drafting
- Health Occupations

Portland Public Schools



## Future of Benson

- New CTE Programs of Study:
  - Computer Science/Engineering
  - Education
  - Engineering

Co-oping  
11<sup>th</sup> & 12<sup>th</sup> graders from all PPS high schools will have the opportunity to take CTE pathway courses from Benson

Portland Public Schools

## Benson's Five Year Plan 2013-14 - 2017-18

- Instruction
  - Expand AVID to include all grades
  - Expand Tech-Geo and Tech Algebra-Enterprise classes
- Community Building
  - Benson Tech Foundation and Alumni continue to identify and expand organizations, businesses and/or educational partners
  - Maintain existing & expand student-internship/apprenticeship opportunities
  - Strengthen and expand partnership with higher education institutions
- Development
  - Increase freshmen enrollment from 275 to 300.
  - Strengthen and expand Benson's CTE programs
  - Expand CTE advisory committees to include new partners involved in the Master Planning as well as to reflect on evolving technology
  - Grow the school's Booster and Alumni Club membership

Portland Public Schools

## Programs Located at Benson

- Dart
- Reconnect
- Alliance
- PISA
-

Programs at Benson continued...		
School/Program	Population Served	Outcome
Portland Evening Scholars  Summer Scholars	District HS Credit recovery <ul style="list-style-type: none"> <li>• Evenings M-TH, 5:00-9:00 pm during the school year</li> <li>• Academic Priority students</li> </ul> <ul style="list-style-type: none"> <li>• Two 3 week Summer Semesters</li> <li>• 32% of PPS 2015 graduates completed a PES/SS course</li> </ul>	Credit Recovery  and  High School Graduation
Portland International Student Academy - PISA	District Emergent Bilingual Program <ul style="list-style-type: none"> <li>• ESL newcomer students</li> <li>• Students at ELPA level 1 &amp; 2</li> </ul>	Continued Enrollment  HS Graduation
Step UP	District Self Contained Classroom <ul style="list-style-type: none"> <li>• Special Education HS students</li> </ul>	Continued Enrollment
Virtual Scholars	Blended online courses for Benson High School students	Progress toward HS Graduation

Portland Public Schools

Capital Bond Considerations
<ul style="list-style-type: none"> <li>• Design team on board in September</li> <li>• Education Specifications and Master Planning completed by June 2016</li> <li>• Considerations for on-site swing space. School enrollments (Benson Polytechnic, Multiple Pathways and other programs) will impact ability.</li> </ul>

Portland Public Schools

## Capital Bond Considerations

- If potential November 2016 ballot measure approved by voters earliest projections are:
  - Design in 2017 and 2018
  - Construction 2018 through 2020
  - Occupancy of a fully modernized campus in September 2020.

# ***Benson High School Enrollment Overview***

## Enrollment Context

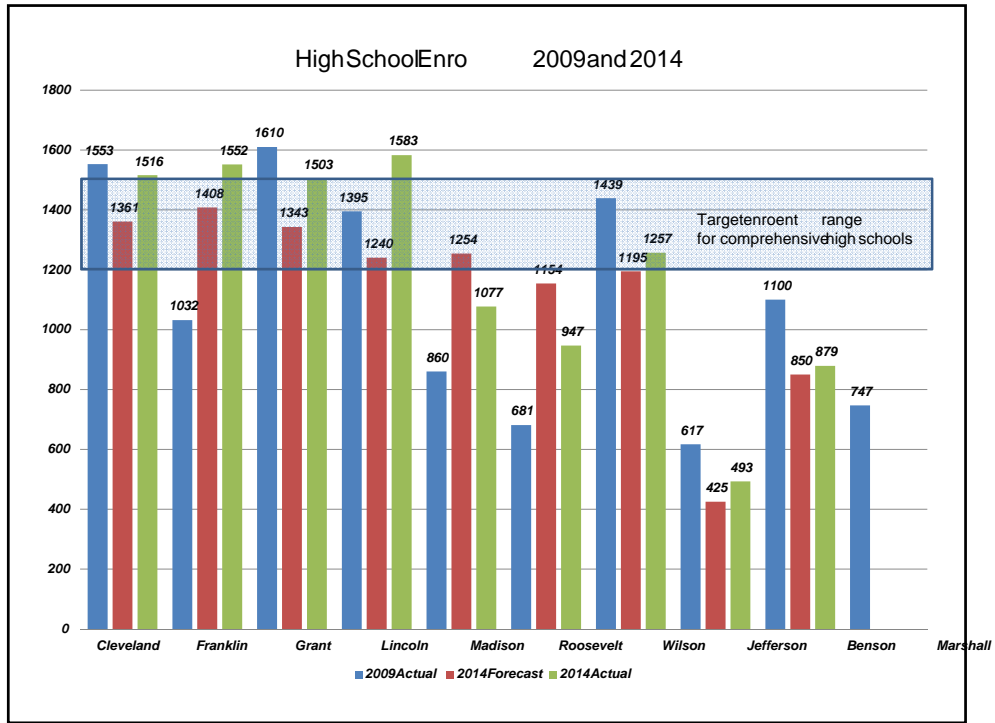
- *A hundred year long story*
- *Focus on high school recent history*

## 20 year enrollment by schooltype

- Highschoolsystemdesignprinciples(2009)
  - 72%of studentsto comprehensiveschools
  - 12%to focusoptions
  - 16%to PPSalternatives, specialschoolsandCBOs
- Systemgoals: Parityin deliveryof core programsin

Actual and Forecast PPS High School





## Current Benson Enrolment

- Enrolment target of 850 set in 2010


DRAFT

s\$—1HÀ 3A 11 2s'2s% b\$4 R 3' - 0s Aø 4 Q3



## Benson enrollment by neighborhood

- ~~Benson enrollment continues to be dominated by students who live in the Jefferson, Madison and Roosevelt zones~~
- ~~A Benson balance was introduced in 2014 to help produce a student body more reflective of the whole district~~
- ~~Even with the balance and increased outreach to underrepresented neighborhoods, demand continued along predictable patterns in 2015~~

